

# Gidimani, Lindi, gidimani!

Mukonesi: Helga Hoveka

Muñwali: Sue Setton

**Themo 1 – Bugu Khulu 2**



Tshivenda

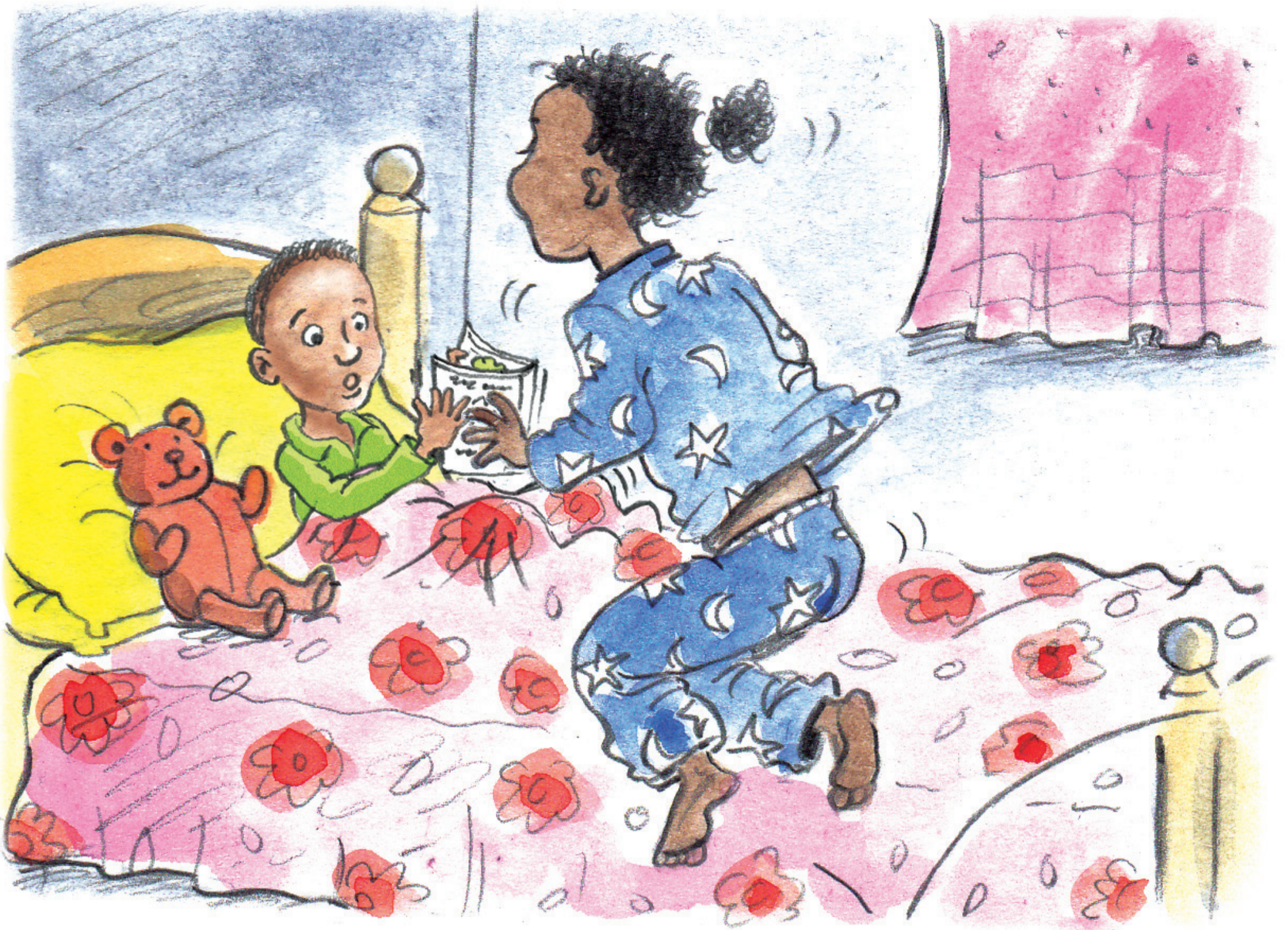


**GAUTENG PROVINCE**  
EDUCATION  
REPUBLIC OF SOUTH AFRICA

**GGT 2030**  
GROWING GAUTENG TOGETHER



Lindi o vha a tshi dzula na  
mme awe, makhulu wawe na  
kukaladzi kwawe, Paul.



Lindi u funesa u gidima.  
O vha a tshi gidima huñwe  
na huñwe. Lindi o vha a tshi  
gidima na u fhufhela nṭha ha  
mmbete vhusiku vhuñwe  
na vhuñwe.



Ḳinwe ḡuvha ho vha na  
mbambe. Vhana vho vha vho  
vhea magona mutaloni, vho  
ḡilugisela u gidima.  
“Magona fhasi, ḡilugiseleni,  
ḡuwani!”



Lindi o gidima sa  
ntsamavhuvhu! O gidimesa  
nga nḡila ye o vha a saathu u  
gidima ngayo na mathomoni.  
“Gidimani, Lindi, gidimani!”



Lindi o pfa muñwe na muñwe a  
tshi khou mu ṭuṭuwedza.

O ḍipfa o takala na u vha na  
maanḍa. “No shuma, Lindi!

Ho vha inwi ñwana wa u  
thoma u ṭhaphudza mbambe!”

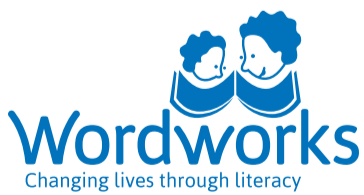


Musi Lindi a tshi ya hayani,  
o vha o ambara mendele  
wawe muswa u penyelelaho.  
Muṭa wa hawe woṭhe wo vha  
u tshi khou ḡihudza ngae.



**USAID**  
FROM THE AMERICAN PEOPLE

**ZENEX**  
FOUNDATION



Iyi Bugu Khulu yo bveledzwa nga Wordworks.  
Nyolo nga Jacqui Botha. Phindulelo nga Maanda Khukhusela.  
Dzudzanywa nga Mpho Makwarela.

Bugu Khulu yo nethshedzwa laisentsi nga fhasi ha Creative Commons Attribution 4.0 License (<http://creativecommons.org/licenses/by/4.0/>).

