

# Ali na pennde

Mukonesi: Helga Hoveka

Muñwali: Brigid Comrie

**Themo 1 – Bugu Khulu 3**

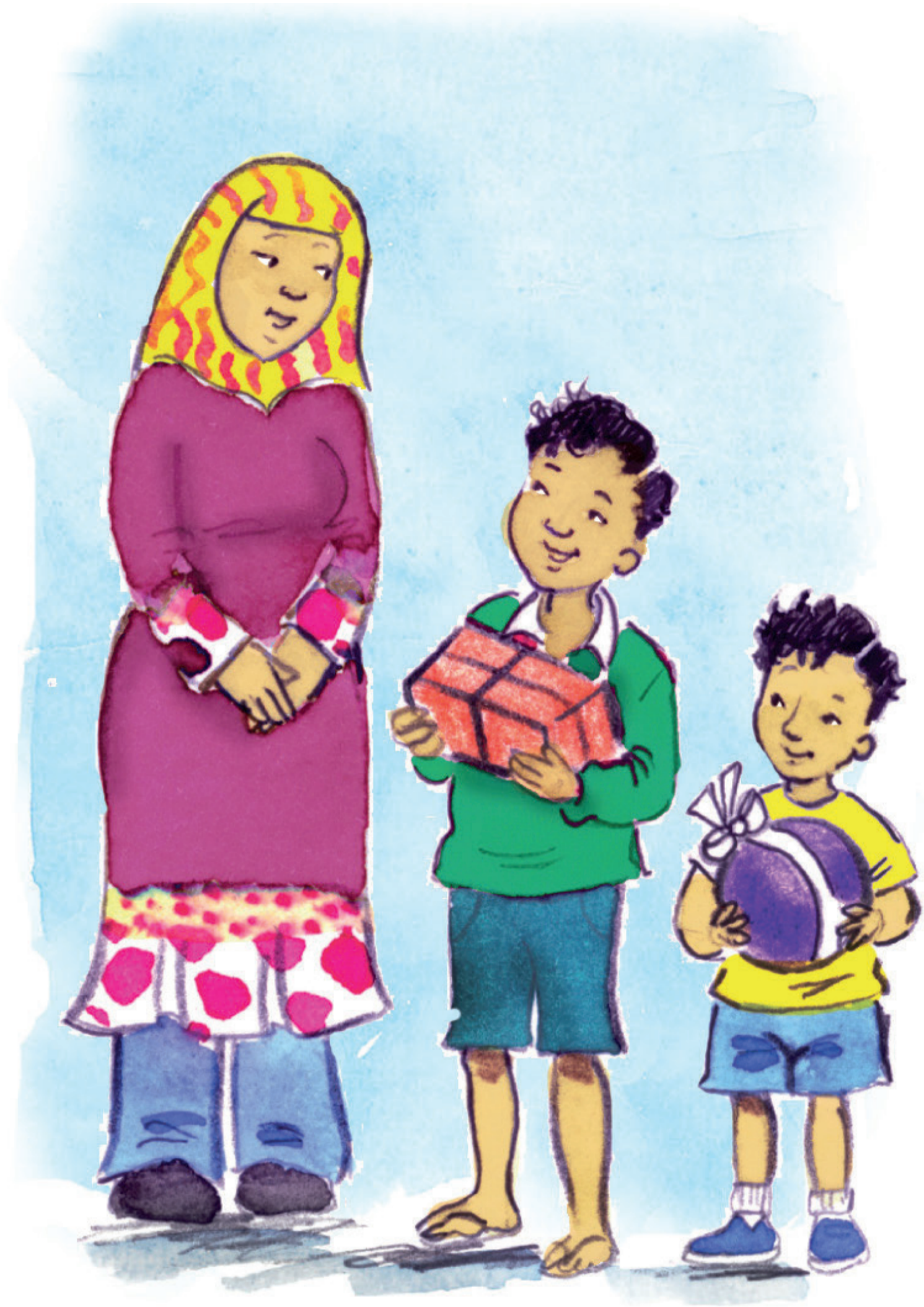


Tshivenda



**GAUTENG PROVINCE**  
EDUCATION  
REPUBLIC OF SOUTH AFRICA

**GGT 2030**  
GROWING GAUTENG TOGETHER



Mme vho ṅetshedza Ali na  
Musa dzimpho.





Ali o wana bola. Musa o  
wana bogisi ɔa dzipennde.





Musa o mbo ɔi bvela nnɔa.  
Ali o mbo ɔi vhona bogisi  
la dzipennde.





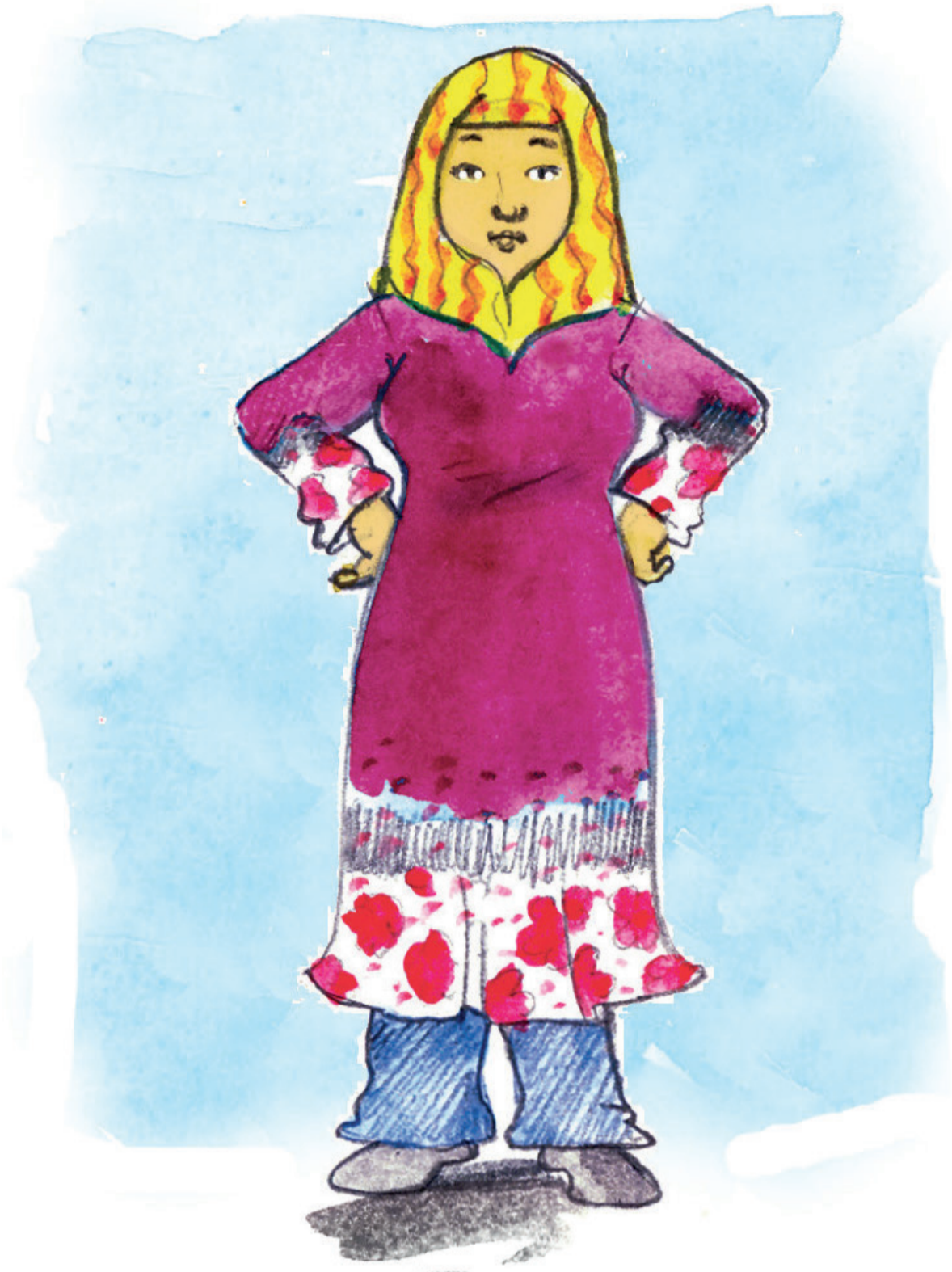
Ali o mbo ɔ̄i pennda ningo  
yawe ya vha dala.





Ali o mbo ḡi pennda thumbu  
yawwe ya vha tswuku na u  
pennda zwikunwe zwawe vha  
zwa lutombo.





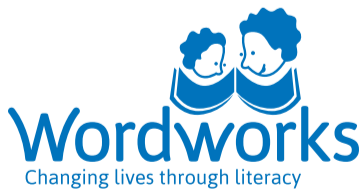
Mme vho ri “Ni khou ita mini,  
Ali?” Vho mbo ɔi ʔanzwa  
ningo, thumbu na zwikunwe  
zwa Ali vha mbo ɔi vhea  
dzipennde kule u itela uri  
a songo tsha kona u dzi  
wana hafhu.





**USAID**  
FROM THE AMERICAN PEOPLE

**ZENEX**  
FOUNDATION



Iyi Bugu Khulu yo bveledzwa nga Wordworks.  
Nyolo nga Jacqui Botha. Phindulelo nga Maanda Khukhusela.  
Dzudzanywa nga Mpho Makwarela.

Bugu Khulu yo neshedzwa laisentsi nga fhasi ha Creative Commons Attribution 4.0 License (<http://creativecommons.org/licenses/by/4.0/>).

