

# Tshibode na gwangwa latsho

Mukonesi: Helga Hoveka

Muñwali: Brigid Comrie

**Themo 2 – Bugu Khulu 4**



Tshivenda



**GAUTENG PROVINCE**  
EDUCATION  
REPUBLIC OF SOUTH AFRICA

**GGT 2030**  
GROWING GAUTENG TOGETHER





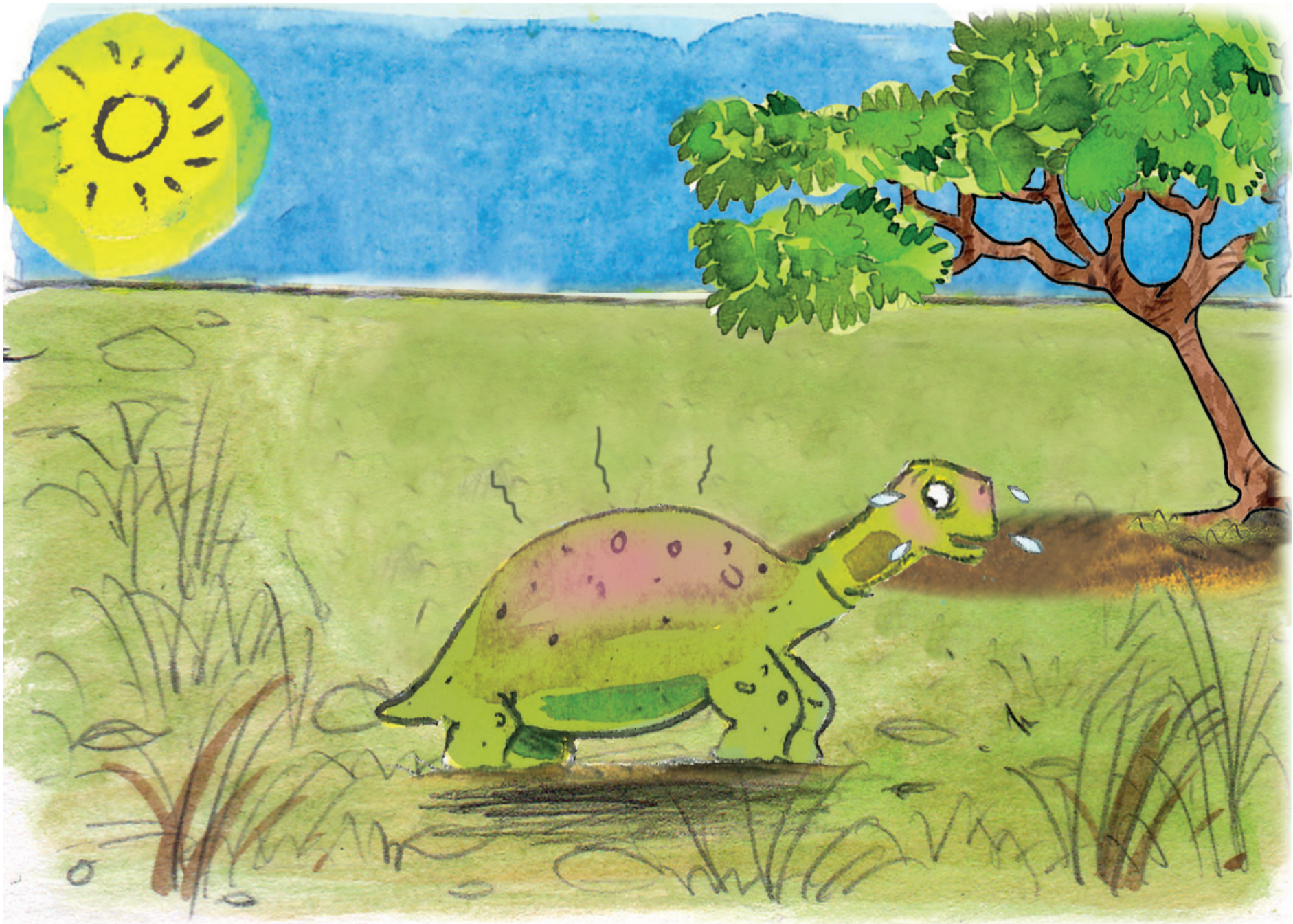
Tshibode tshine tsha pfi  
Tommy tsho vha tshi tshi  
dzula tsimuni tshi tshoꝑhe.  
Tsho amba tsha ri, “Ndi tama  
arali ndo vha ndi tshi kona u  
gidima nga u ꝑavhanya u tou  
fana na zwiꝑwe zwipuka.”





Tommy tsho mbo ɔi kokovha  
tsha bvela nnda ha gwangwa  
latsho tsha vhidzelela,  
“Ntsedzeni! Ndi a kona u  
gidima nga u ṭavhanya ndi si  
na gwangwa langa li lemela!”





Nga murahu ha tshifhinga tsho mbo ɔi ima u gidima.

Tsho vha tshi tshi khou fhisa nahone ɔuvha lo vha li tshi khou fhisa mutxana watsho mutete. “A thi na gwangwa langa la u ntsireledza, ngauralo ndi ɔo awela murunzini.”





Tommy tsho mbo ɔi pfa  
phosho lutomboni tsha mbo  
ɔi vhona goni. Tsho mbo ɔi  
ri, “Ndi tama arali ndo vha  
ndi na gwangwa ɔanga ɔa u  
ntsireledza.” Tsho mbo ɔi  
ɔavhanya tsha dzumbama  
phakhoni ya muri.



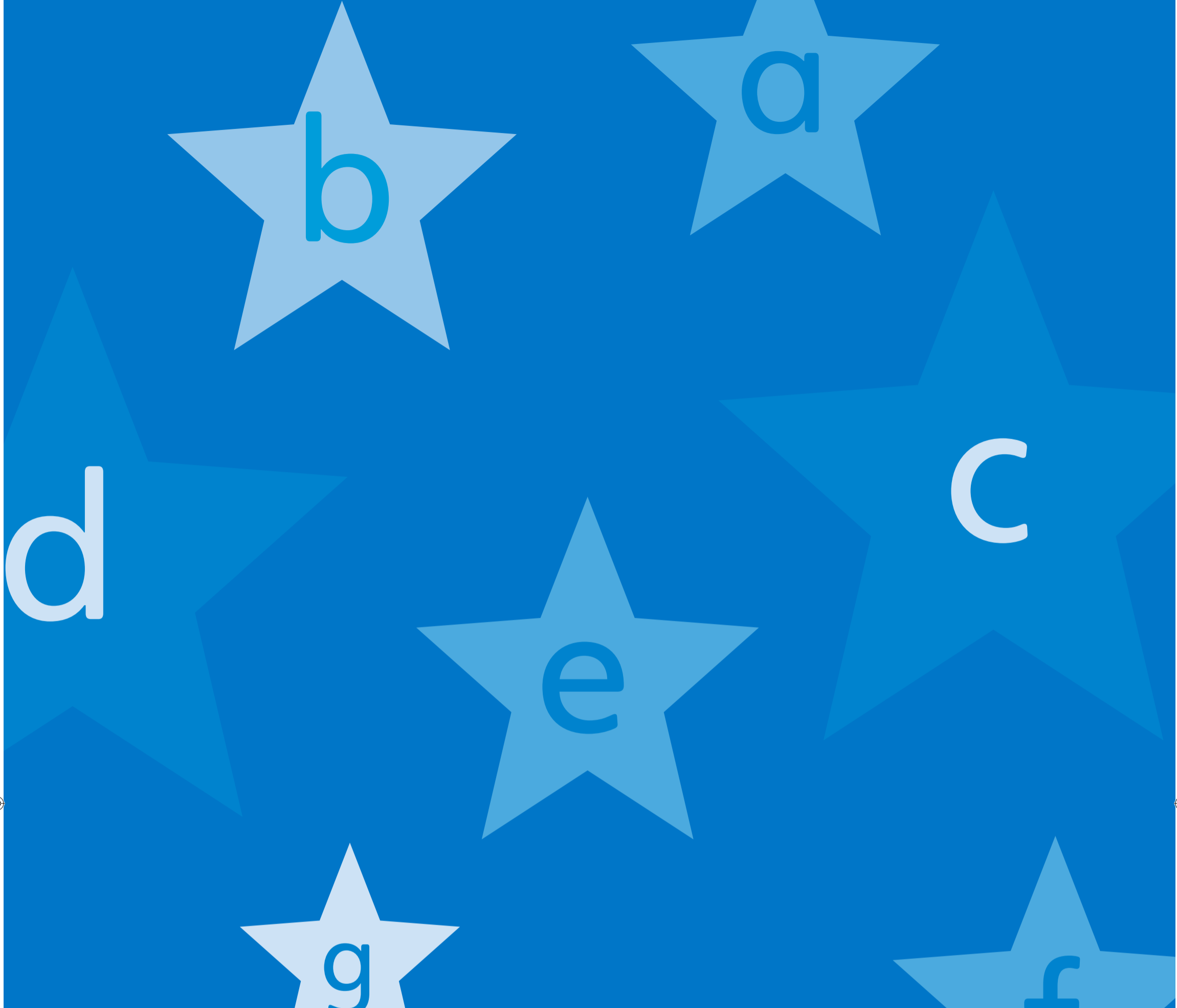


Tommy tsho mbo ɔi gidima  
hafhu. Tsho mbo ɔi pfa  
mubvumo na u pfa mvula  
muɔanani watsho. Tsho ri,  
“Ndi tama arali ndo vha  
ndi na gwangwa ɭanga ɭa  
u ntsireledza.”



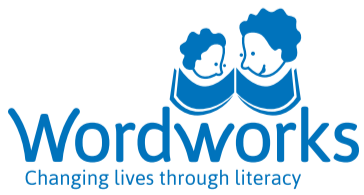


Tommy tsho no ṭuvha gwangwa  
latsho. Tsho mbo ɔ̣i gidima tsha  
mbo ɔ̣i kokovha tsha fovhela  
nga ngomu ha gwangwa  
latsho. Tsho vha tshi tshi khou  
humbula tsha ri, “A thi na  
ndavha nazwo naho arali ndi sa  
koni u gidima nga u ṭavhanya.  
Ndi takalela u vha n̄e mūne!”



**USAID**  
FROM THE AMERICAN PEOPLE

**ZENEX**  
FOUNDATION



Iyi Bugu Khulu yo bveledzwa nga Wordworks.  
Nyolo nga Jacqui Botha. Phindulelo nga Maanda Khukhusela.  
Dzudzanywa nga Mpho Makwarela na Maanda Khukhusela.

Bugu Khulu yo neshedzwa laisentsi nga fhasi ha Creative Commons Attribution 4.0 License (<http://creativecommons.org/licenses/by/4.0/>).

