

Buluvhulu lituku

Mukonesi: Helga Hoveka

Muñwali: Sue Setton

Themo 3 – Bugu Khulu 3

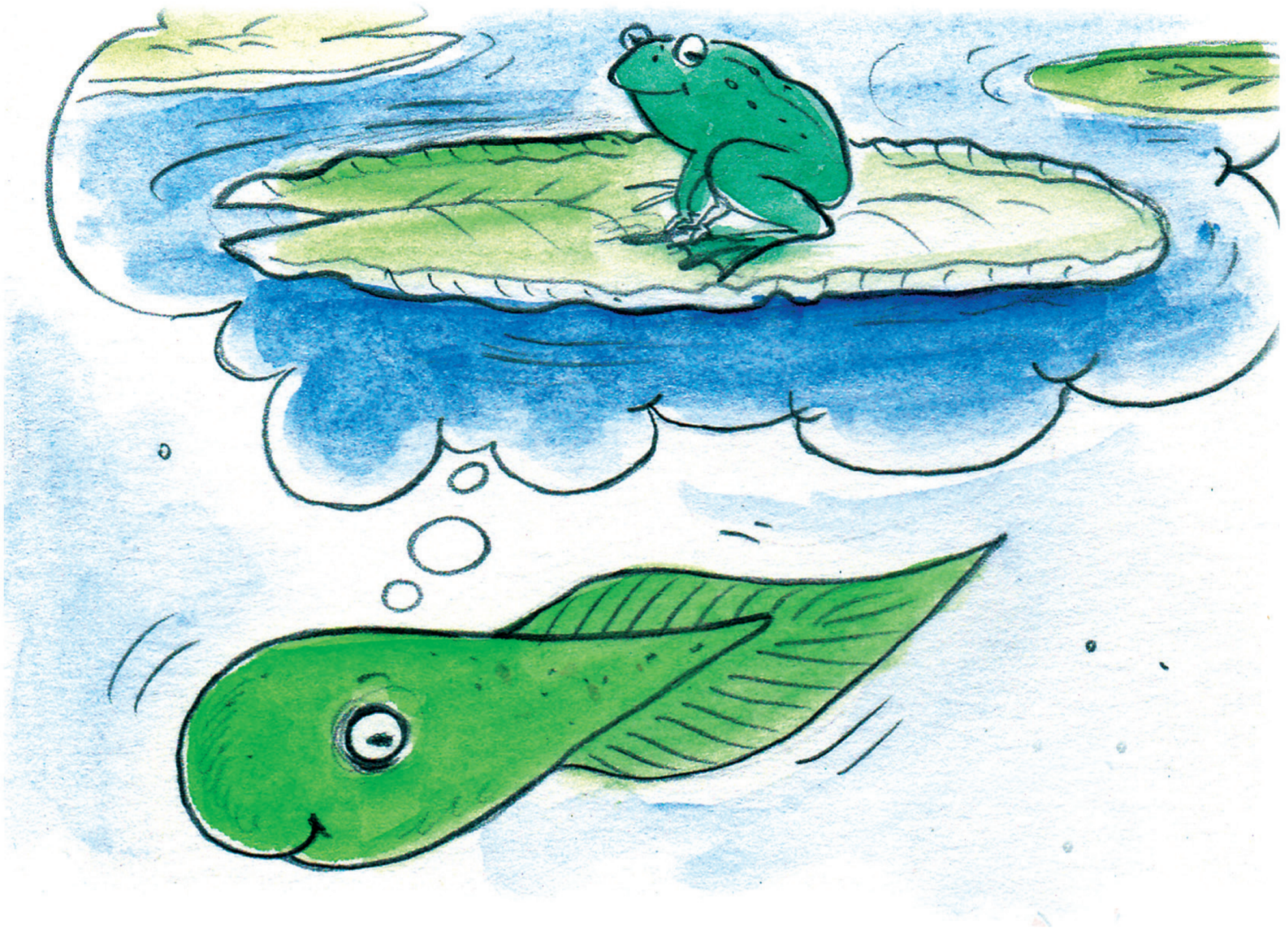


Tshivenda



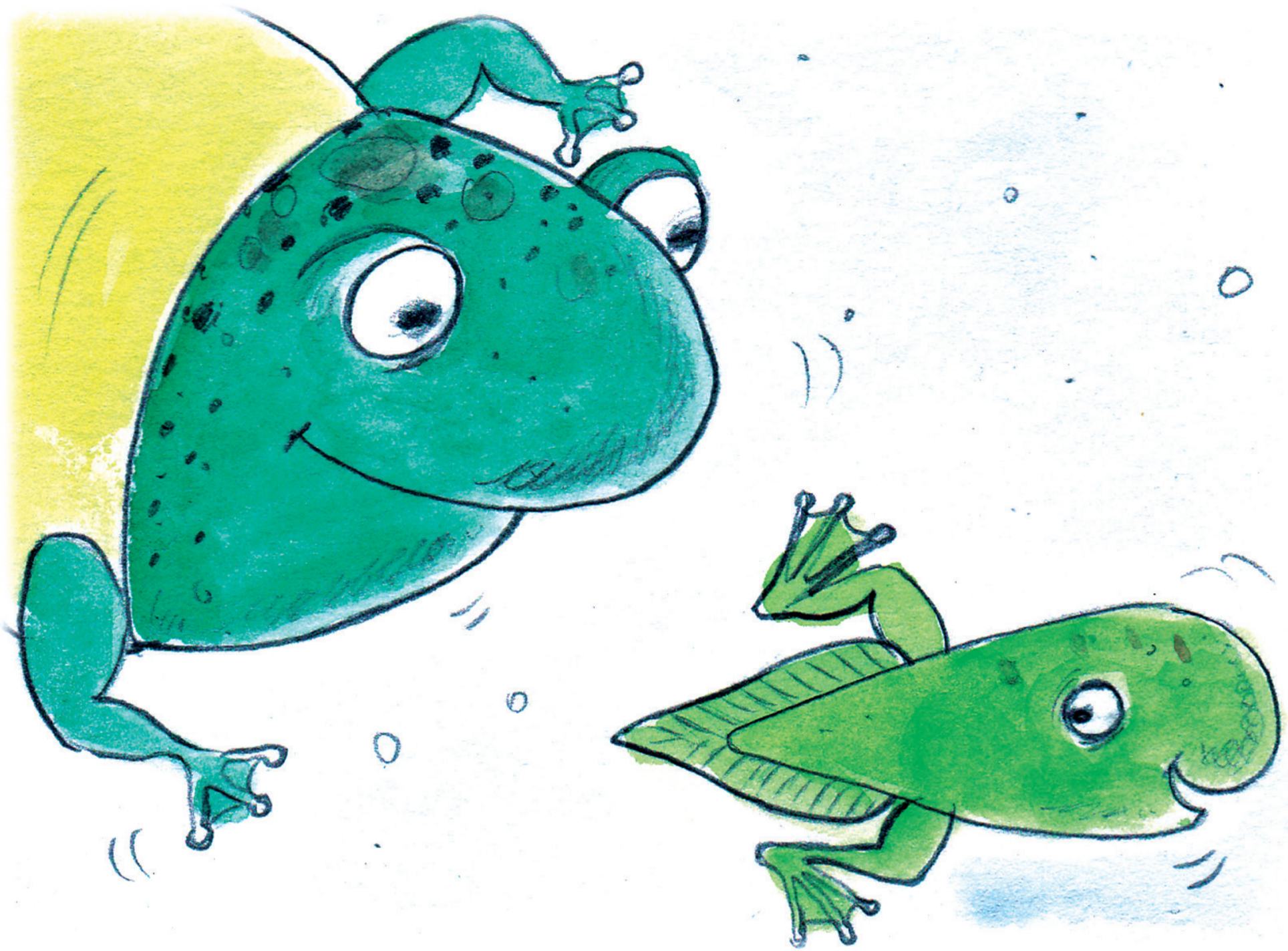
GAUTENG PROVINCE
EDUCATION
REPUBLIC OF SOUTH AFRICA

GGT 2030
GROWING GAUTENG TOGETHER



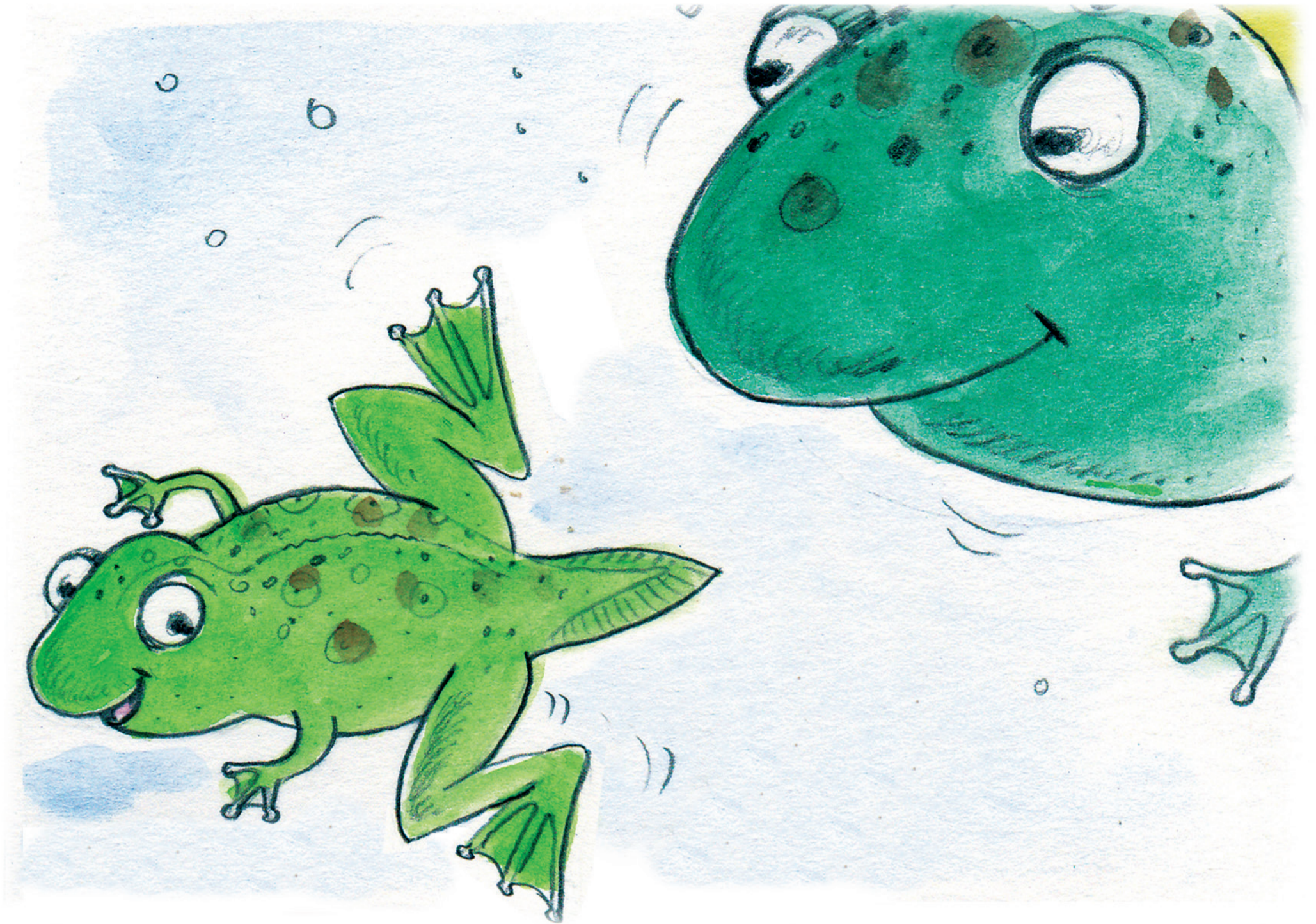
Buluvhulu ɿne ɿa pfi Harry
ɿo vha ɿi tshi dzula tivhani.
ɿo vha ɿi tshi tama arali ɿi
tshi nga kona u thamuwa u
fana na tshidula.





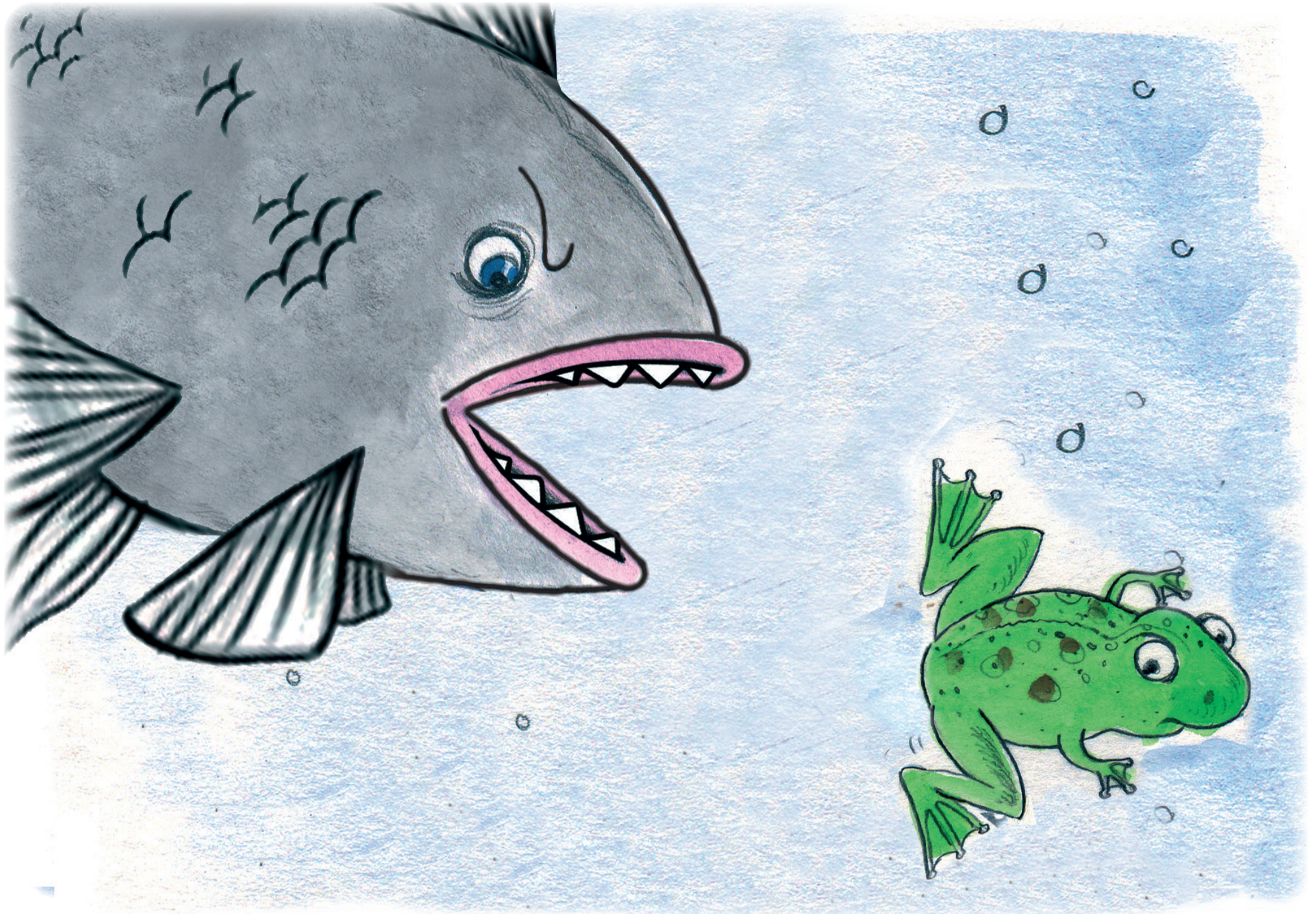
Freddy tsho ri, “Hu si kale
u ɔo vha u tshi khou kona
u thamuwa u tou fana na
n̄e. Vhonai, milenzhe yau ya
murahu yo no hula.”





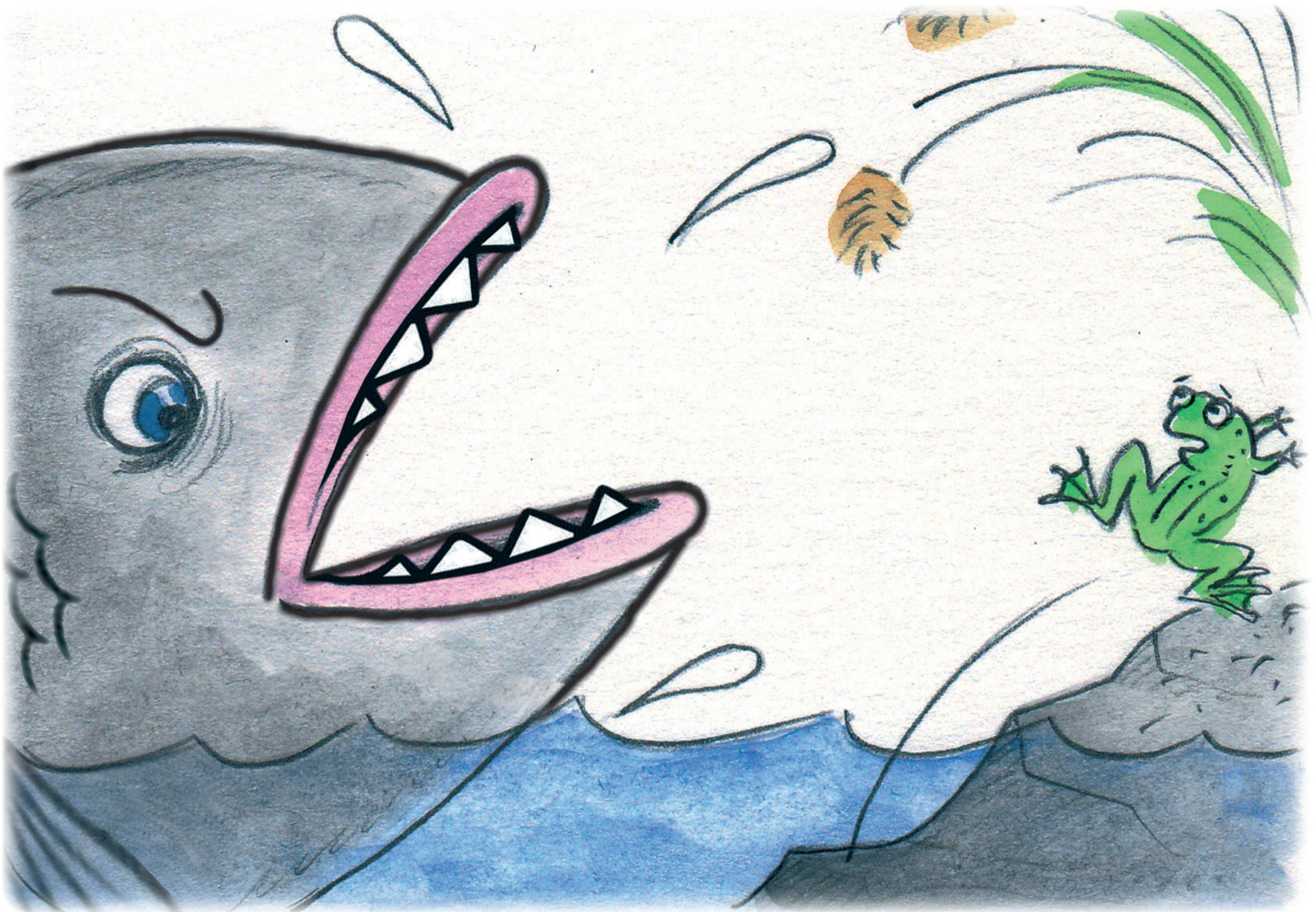
Nga murahu ha tshifhinga
tshilapfu milenzhe ya phanda
ya Harry yo mbo di hula. Lo
vhudzisa la ri, “Ndi nga thamuwa
zwino naa?” Freddy tsho ri,
“Lindelai u swikela mutshila wau
u tshi vha mutukutuku.”





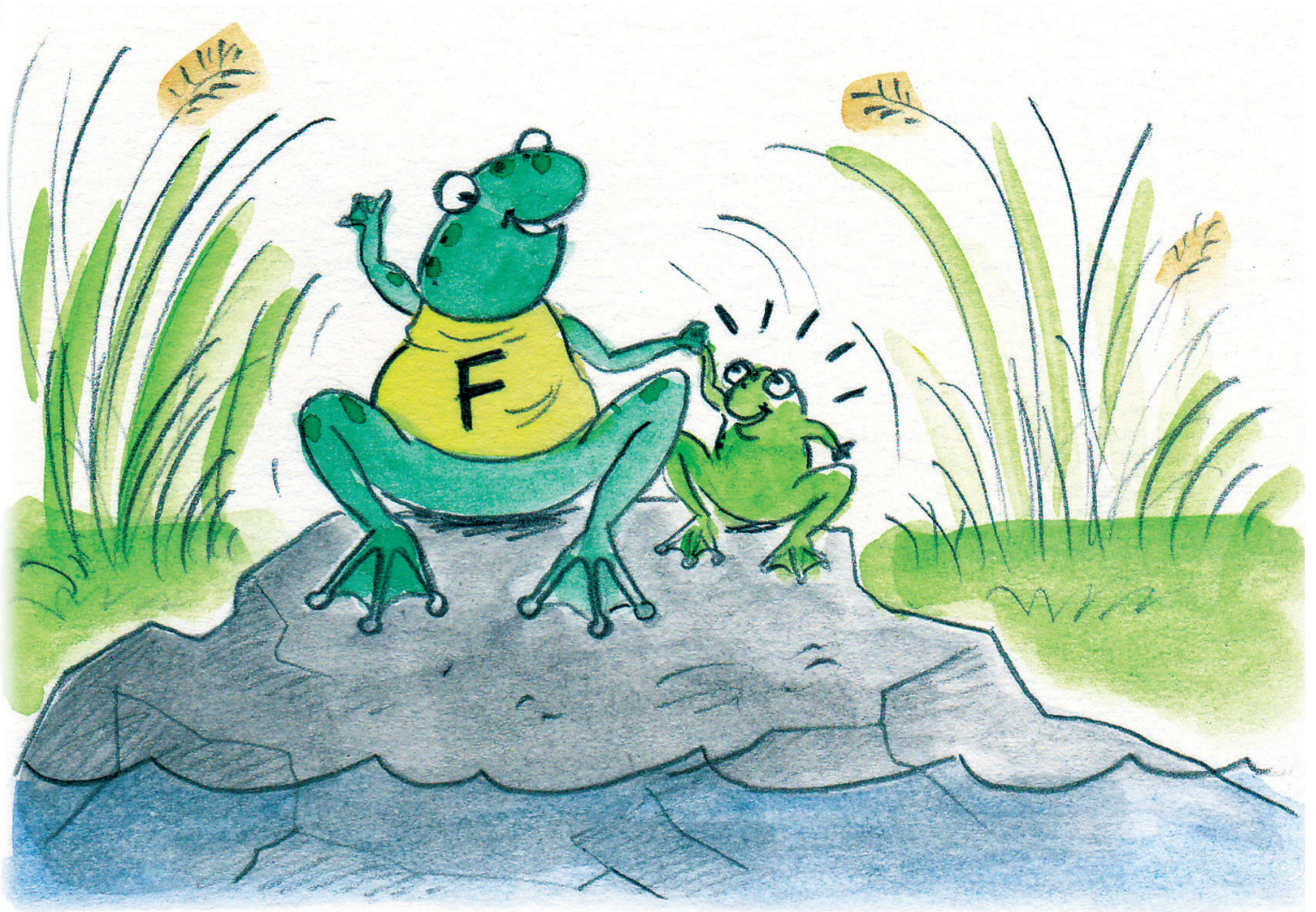
Li nwe duvha likovhe lihulwane
li re na maṅo a fhiraho lo vha
li tshi khou tṱoṱou la Harry!
Harry lo mbo di tala la shavha
nga luvhilo luhulu.





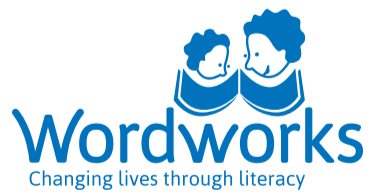
U bva afho, Harry lo mbo di
thamutshela n̄ha ha tombo
li re kha luñwe lurumbu
lwa tivha!





Freddy tsho tshi fhululedza
tsha ri, “No guda uri hu
thamuwiswa hani.”

Harry lo dihudza nga maanda
na u takala saizwi lutamo
lwa lo lwo vha lwa vhukuma.



Iyi Bugu Khulu yo bveledzwa nga Wordworks.
Nyolo nga Jacqui Botha. Phindulelo nga Maanda Khukhusela.
Dzudzanywa nga Mpho Makwarela na Maanda Khukhusela.

Bugu Khulu yo neshedzwa laisentsi nga fhasi ha Creative Commons Attribution 4.0 License (<http://creativecommons.org/licenses/by/4.0/>).

