

Moeng wa Phala

Moswantšhi: Helga Hoveka

E amantšhitšwe le nonwane ya Afrika

Kotara 4 – Puku Kgolo 3



Sepedi



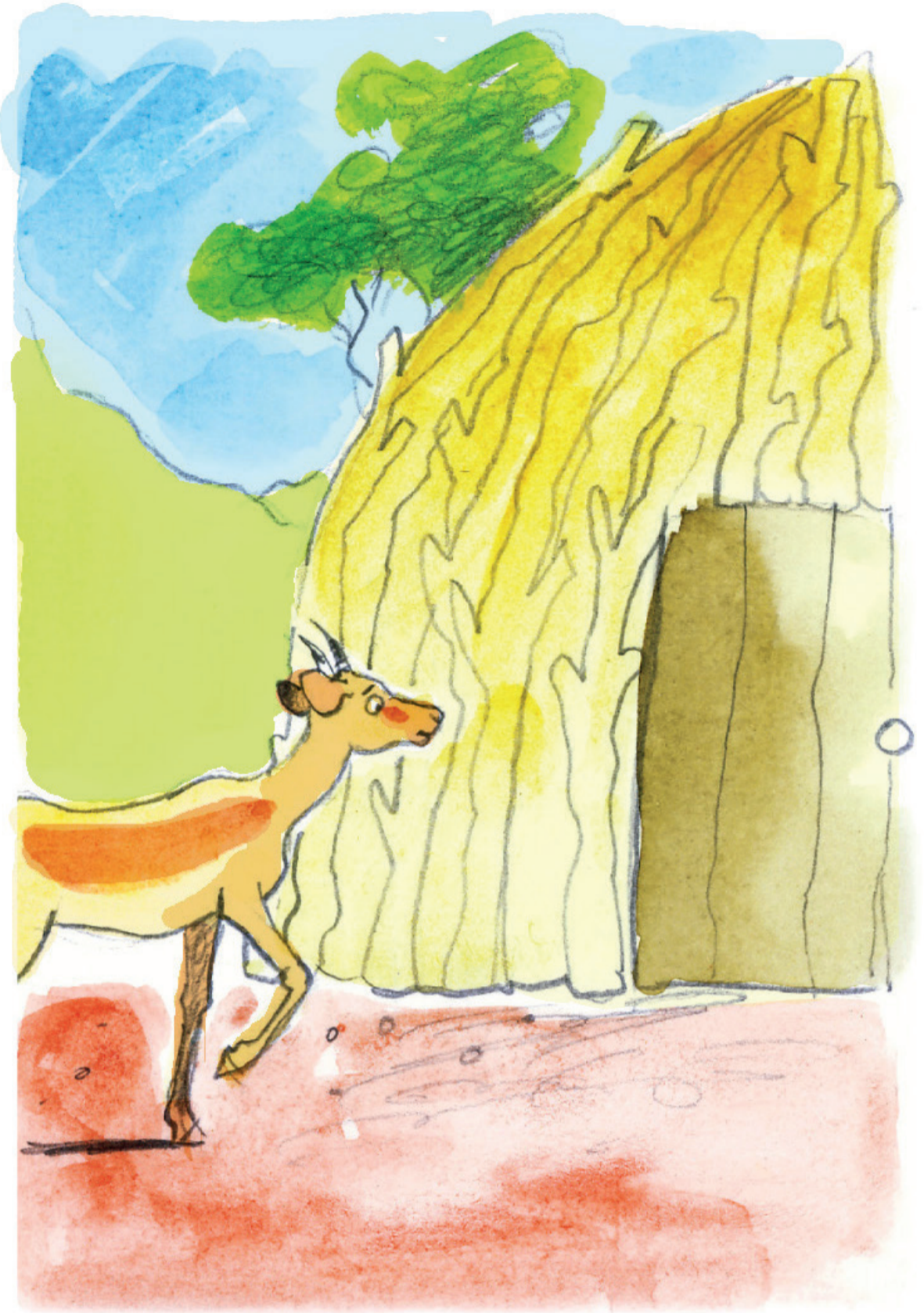
GAUTENG PROVINCE
EDUCATION
REPUBLIC OF SOUTH AFRICA

GGT 2030
GROWING GAUTENG TOGETHER

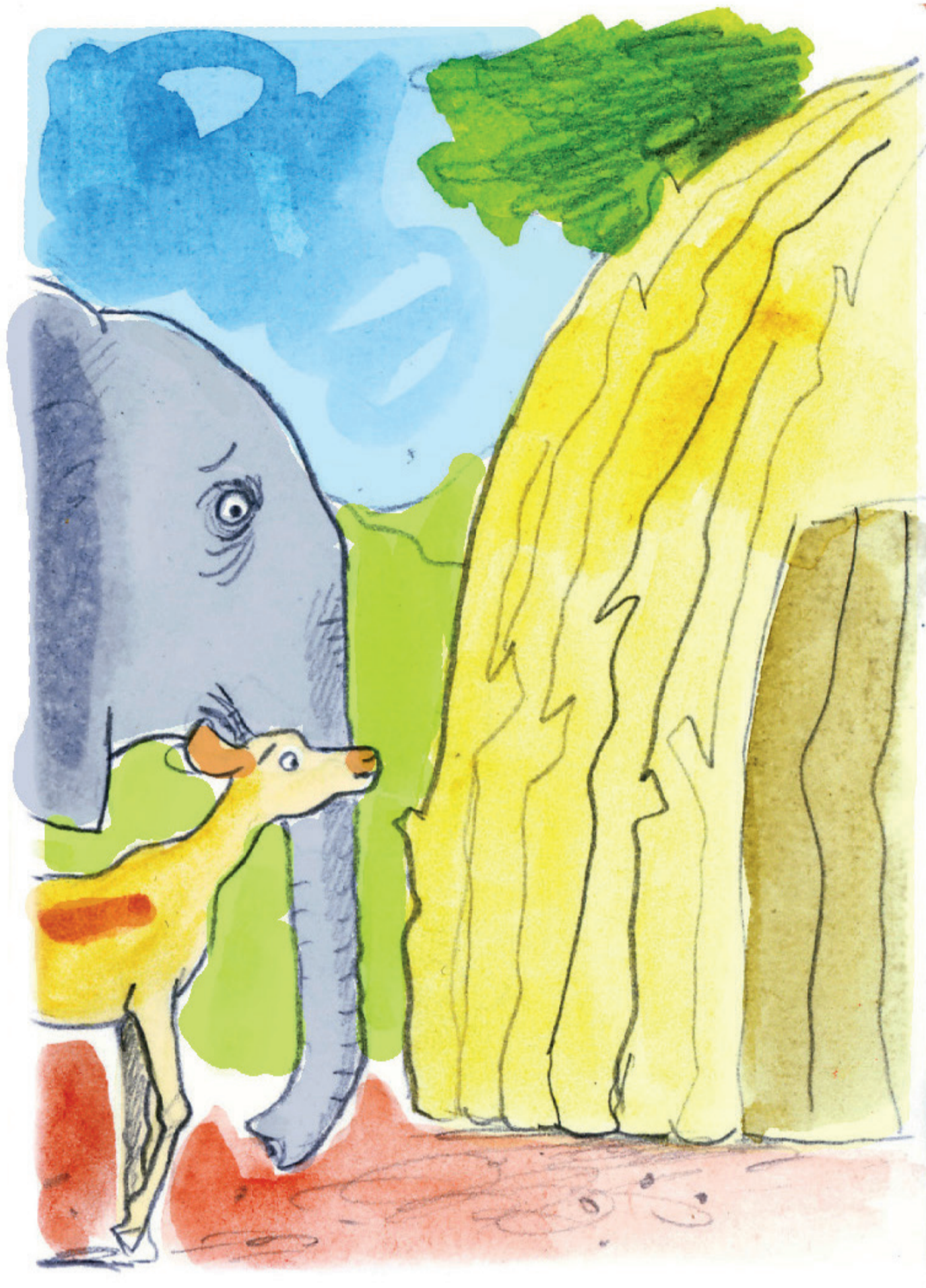


Phala e be e dula ka gare
ga ntlo ye nyenyane ya go
agwa ka dikota. E be e fela e
tlogela monyako wa ntlo o
butšwe ge e tšwela ka ntle.

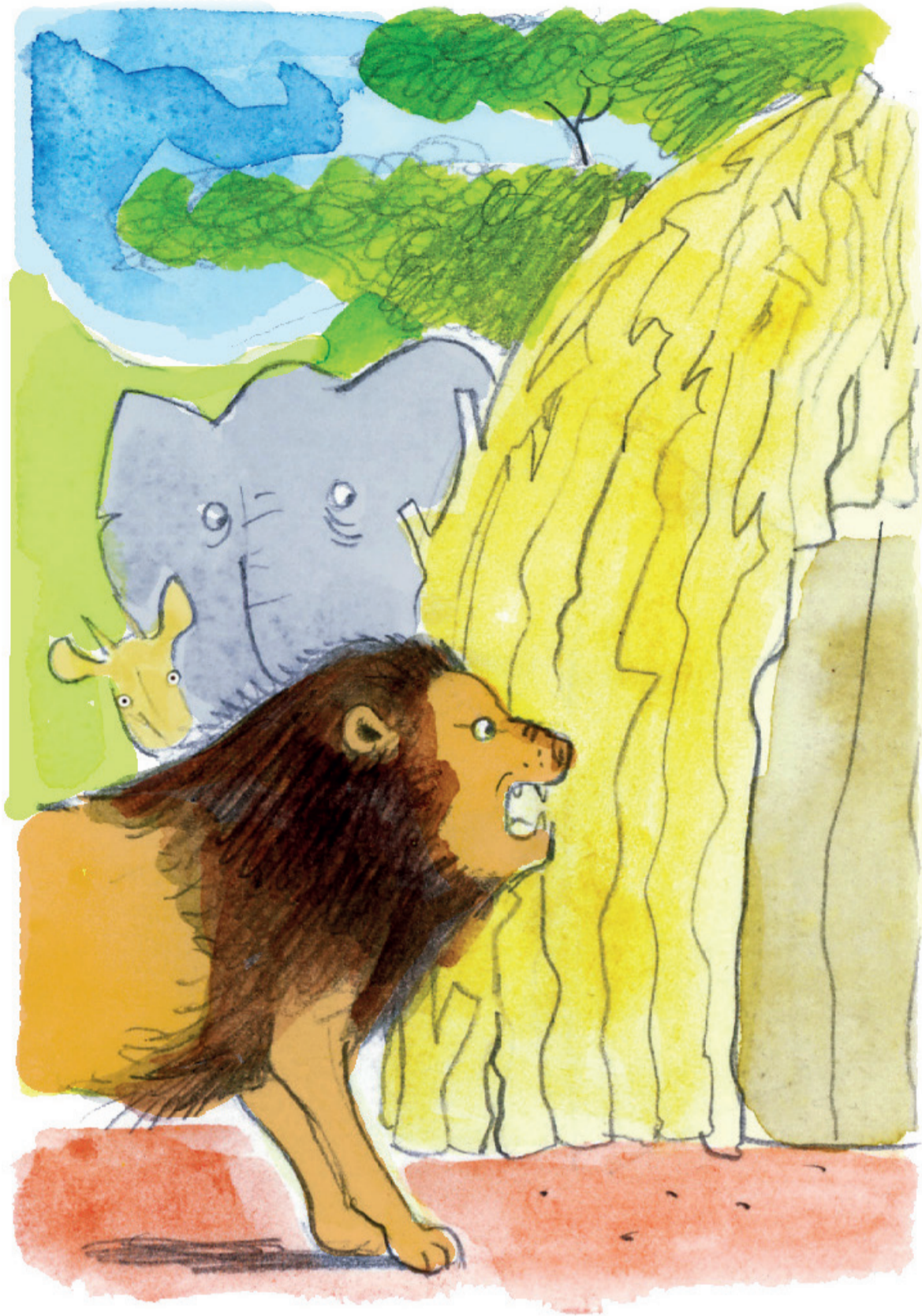




Ka letšatši le lengwe ge Phala e boa gae ya hwetša monyako o tswalet we. Go ile gwa kwagala lentšu le etšwa ka ntlong le re: “O se ke wa bula monyako wo, ke tla go ja!”



Phala ya bitša mogwera
wa yona gore a tle a thuše.
Lentšu la go tšwa ka ntlong
la re: “O se ke wa bula
monyako wo, ke tla go ja!”



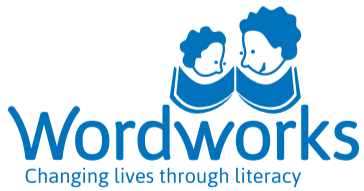
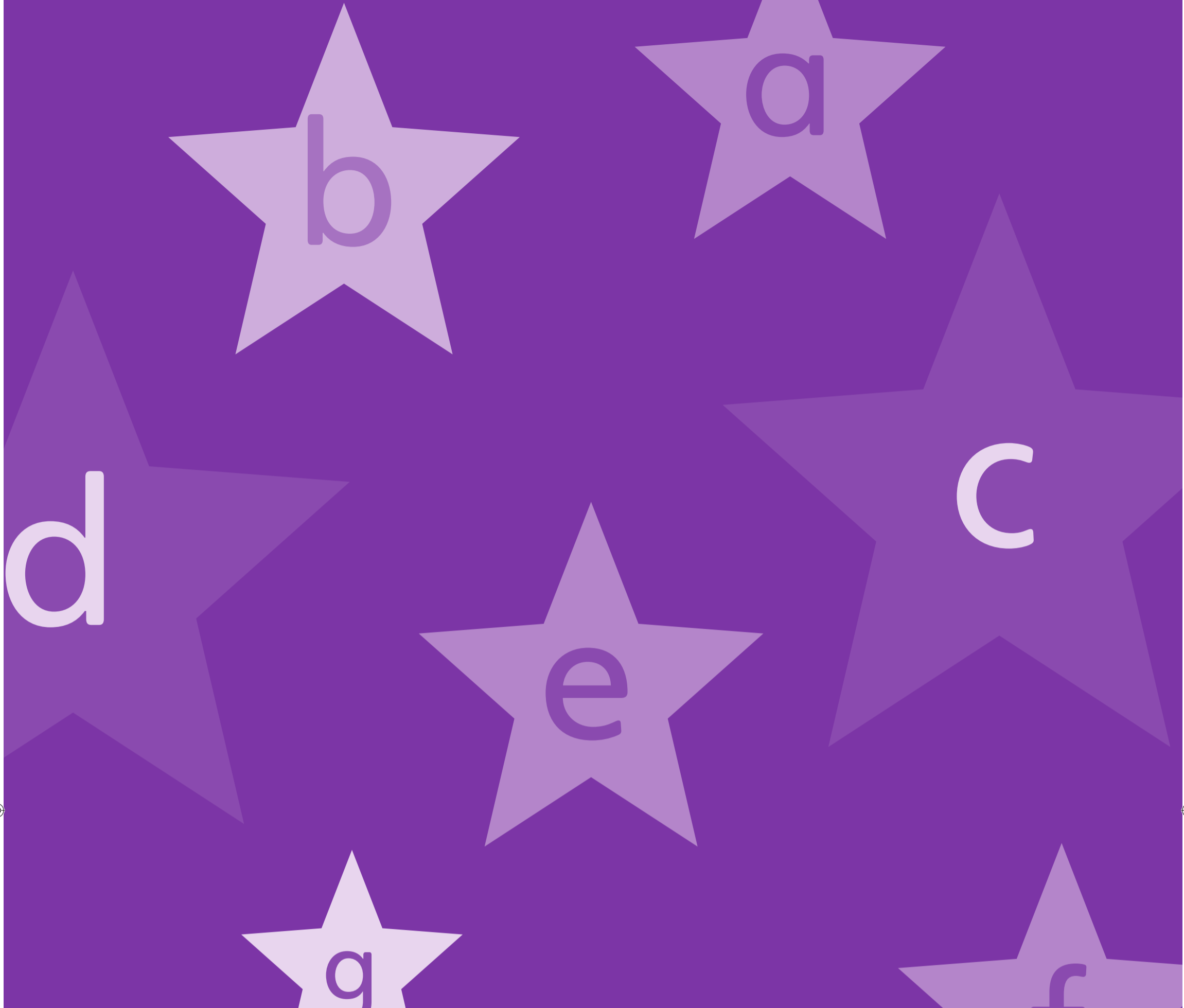
Tlou le Phala tša bitša Tau.
Lentšu la go tšwa ka ntlong
la re: “O se ke wa bula
monyako wo, ke tla go ja!”
Tau ya rora ya re: “Eng? Wa
ja nna, kgoši ya diphoofole?”



Go ile gwa kwagala modumo
wa go katakatana ka tsela
ye, monyako wa bulega
gwa tšwelela segwagwa se
tlolatlola sa re: “Semaka! Ke
nna fela ka mo!”



Bagwera ba ile ba sega ge
ba bona e le segwagwa.
Phala ya re: “Tlou le Tau, ke
le leboga ge le nthušitše, le
bagwera ba mmakgonthe.”



Puku ye ye Kgolo e tšweleditšwe ke Wordworks. Ya beakanywa ke Jacqui Botha. Phetolelo go ya go Sepedi tša dirwa ke Makoma Phatudi. E rulagantšwe ke Makoma Phatudi le Juliah Maphutha.

Puku ye Kgolo e filwe laesense go ya ka Creative Common Attribution 4.0 License (<http://creativecommons.org/licenses/by/4.0/>).

