

Mueni wa Mbavhala

Mukonesi: Helga Hoveka

Yo shandulwa u bva kha ngano ya Vhurema

Themo 4 – Bugu Khulu 3



Tshivenda



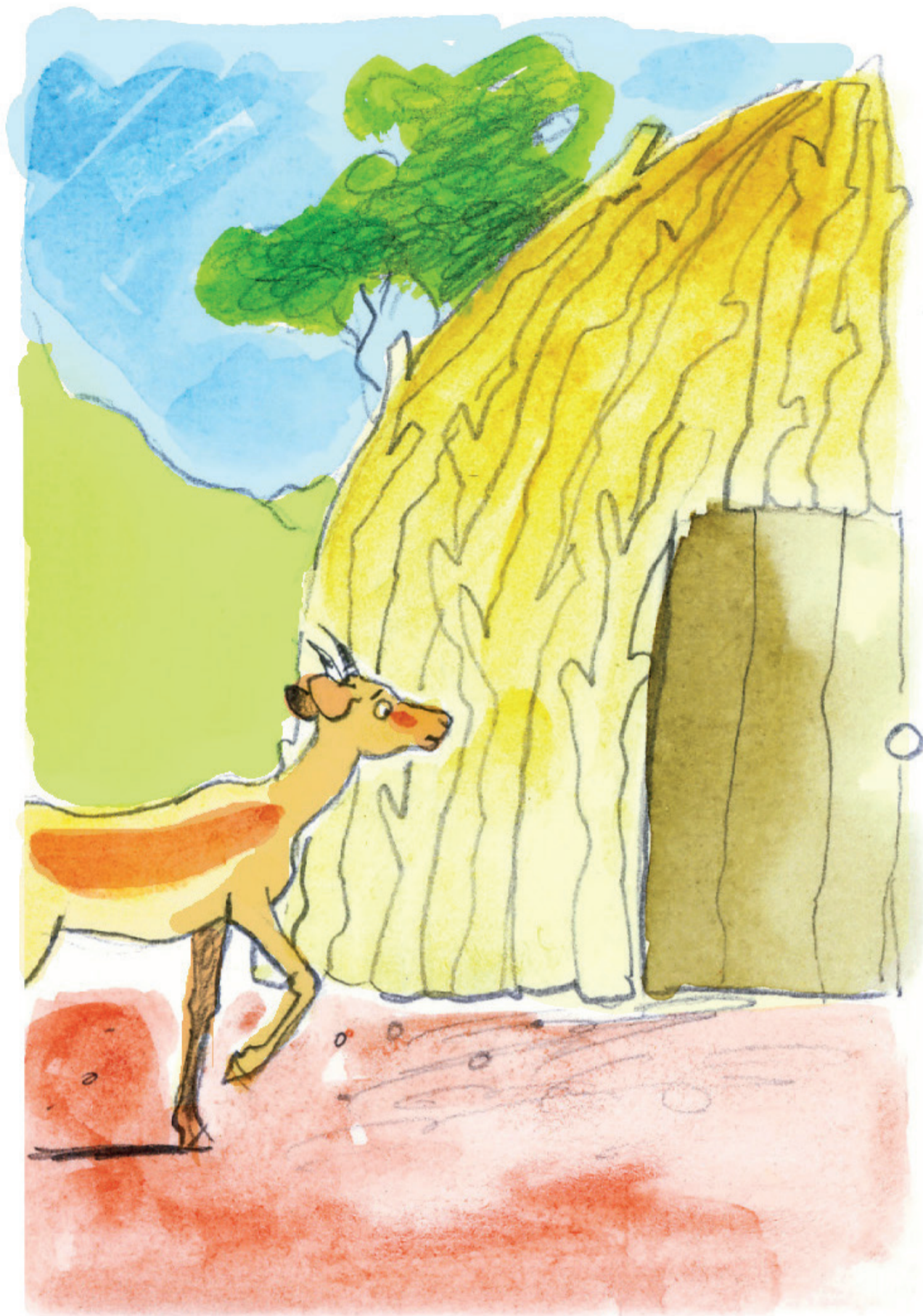
GAUTENG PROVINCE
EDUCATION
REPUBLIC OF SOUTH AFRICA

GGT 2030
GROWING GAUTENG TOGETHER

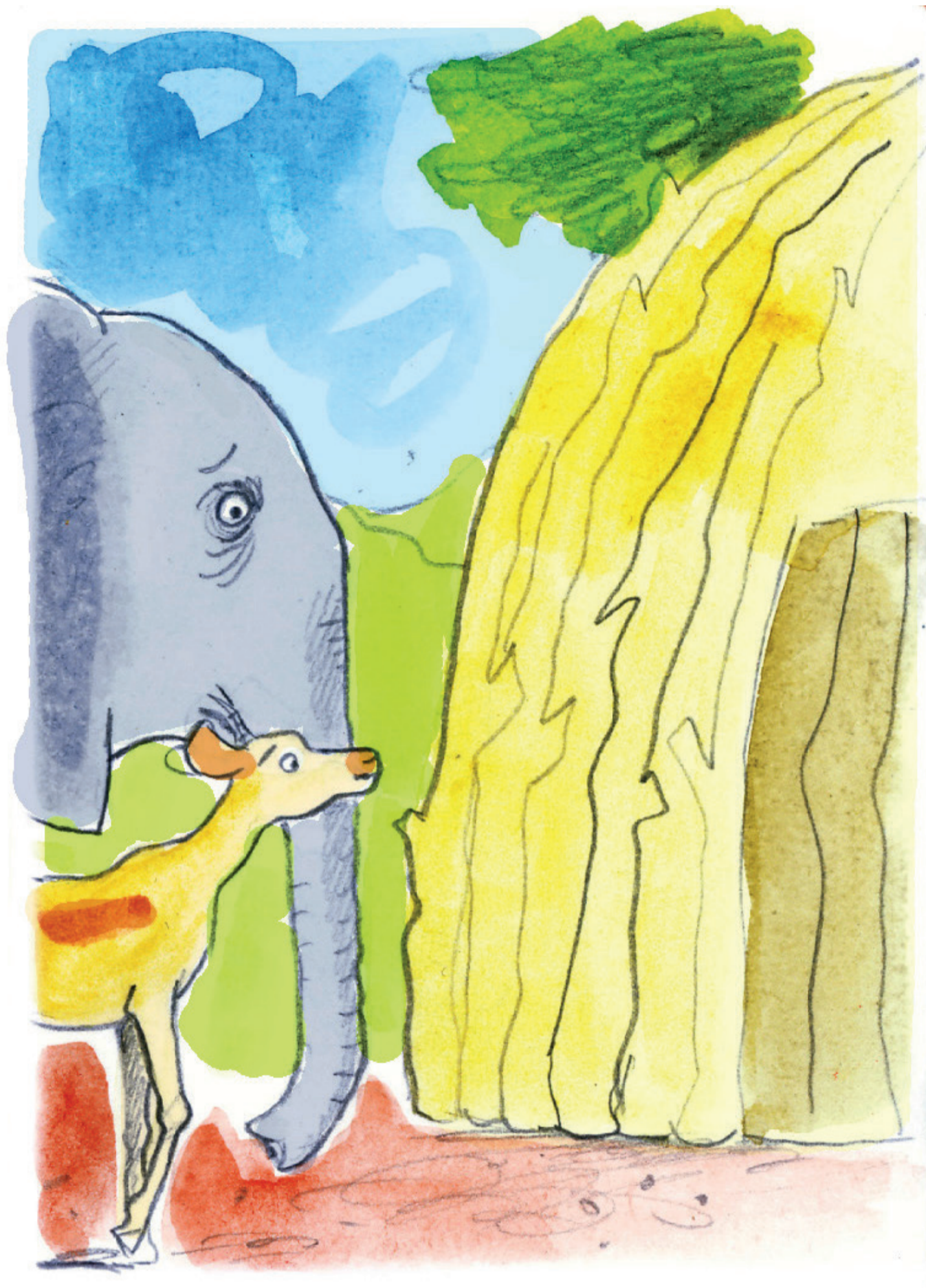


Mbavhala yo vha i tshi dzula
kha kuḁu kwo fhaḁiwaho nga
thanda. Tshifhinga tshoḁhe
yo vha i tshi sia vothi ḁayo ḁo
vulea musi i tshi bva.

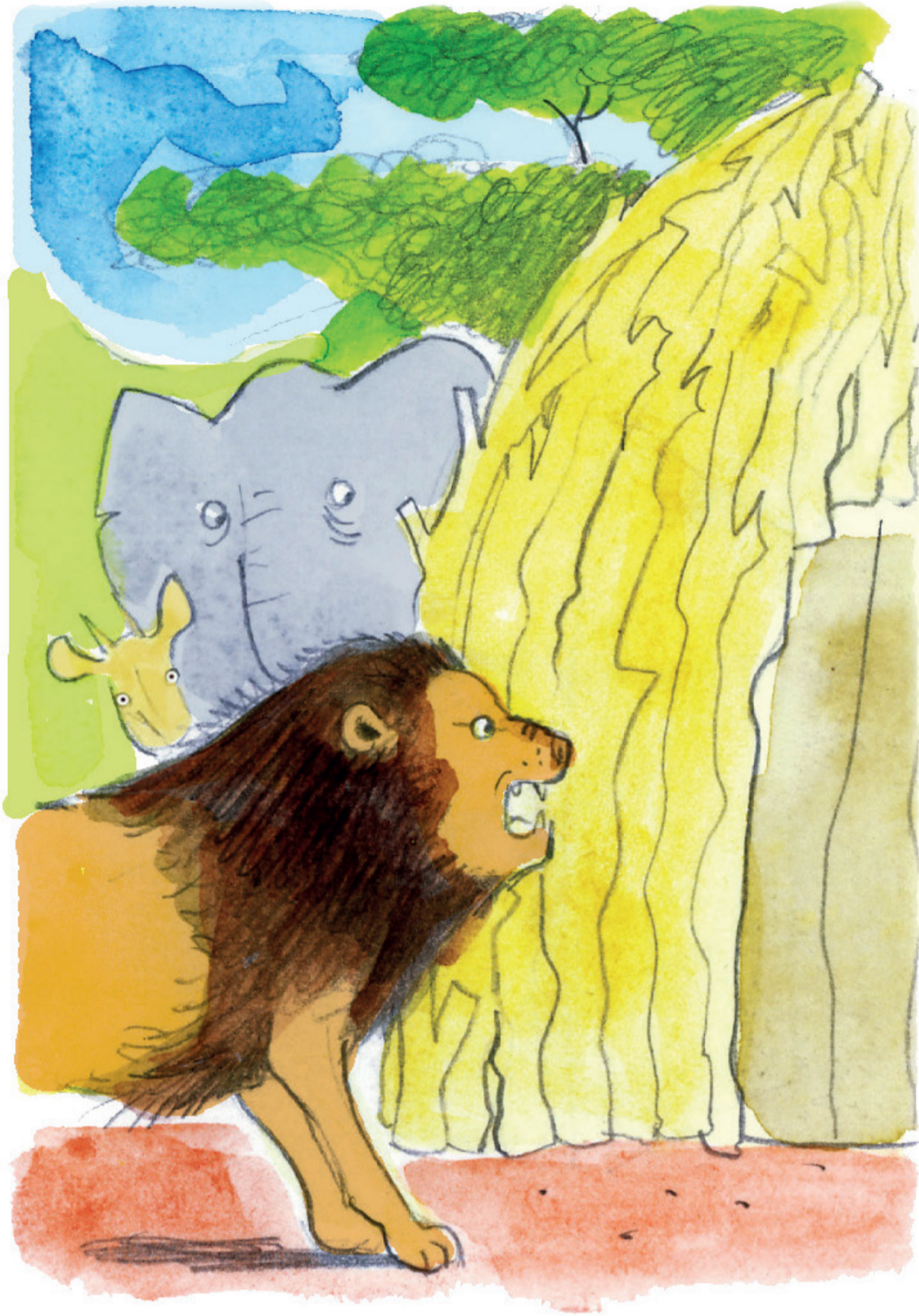




Ḳinwe ḡuvha Mbavhala yo
vhuya hayani. Vothi Ḳo vha Ḳo
valiwa. Ipfi Ḳi re nga ngomu
nḡuni Ḳo ri, “U songo vula
vothi kana ndi ḡo u Ḳa.”



Mbavhala yo huwelela
khonani yayo Nḁou uri a i
thuse. Ipfi ḁo ri, “U songo vula
vothi kana ndi ḁo u ḁa.”



Ngou na Mbavhala dzo mbo
ḡi vhidza Ndau. Ipfi ḡo ri,
“U songo vula vothi kana ndi
ḡo u ḡa.”
“Mini? U ḡa nḡe, khosi ya
zwipuka naa?”

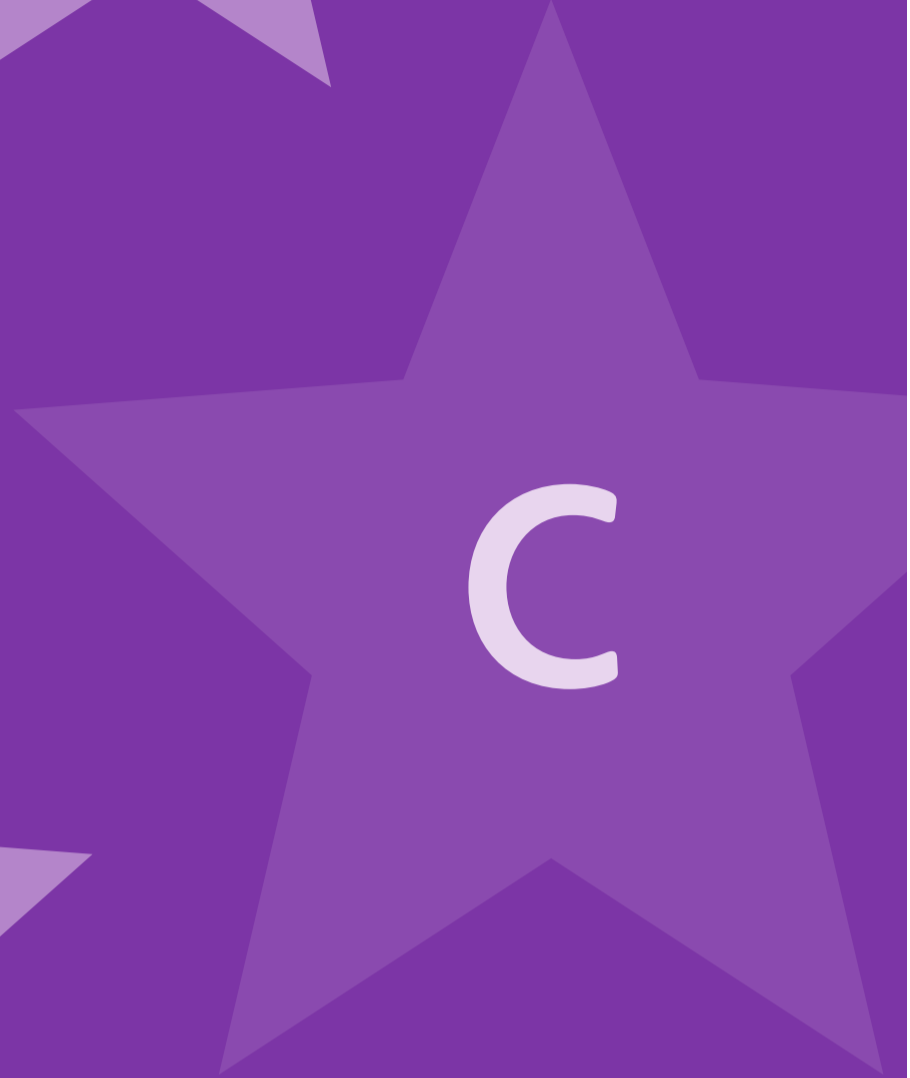
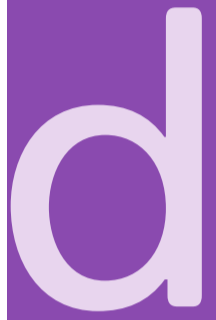


Ha pfala phosho ya u lwisana,
vothi lo mbo di vulea Tshidula
tsho mbo di bvela nnda tshi
tshi khou thamuwa.

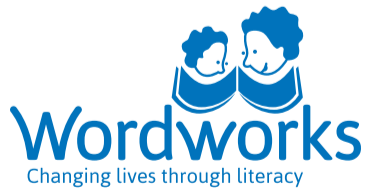
Tshidula tsho ri, “Tshimangadzo!
Ndi nne fhedzi!”



Khonani dzo mbo ɔi fa nga
maseo musi dzi tshi vhona
Tshidula. Mbavhala yo ri,
“Ndo livhuwa thuso yaṅu,
Nḡou na Nḡau!
Ni khonani dzavhuḡi.”



USAID
FROM THE AMERICAN PEOPLE



Iyi Bugu Khulu yo bveledzwa nga Wordworks.
Nyolo nga Jacqui Botha. Phindulelo nga Maanda Khukhusela.
Dzudzanywa nga Mpho Makwarela na Maanda Khukhusela.

Bugu Khulu yo neshedzwa jaisentsi nga fhasi ha Creative Commons Attribution 4.0 License (<http://creativecommons.org/licenses/by/4.0/>).

