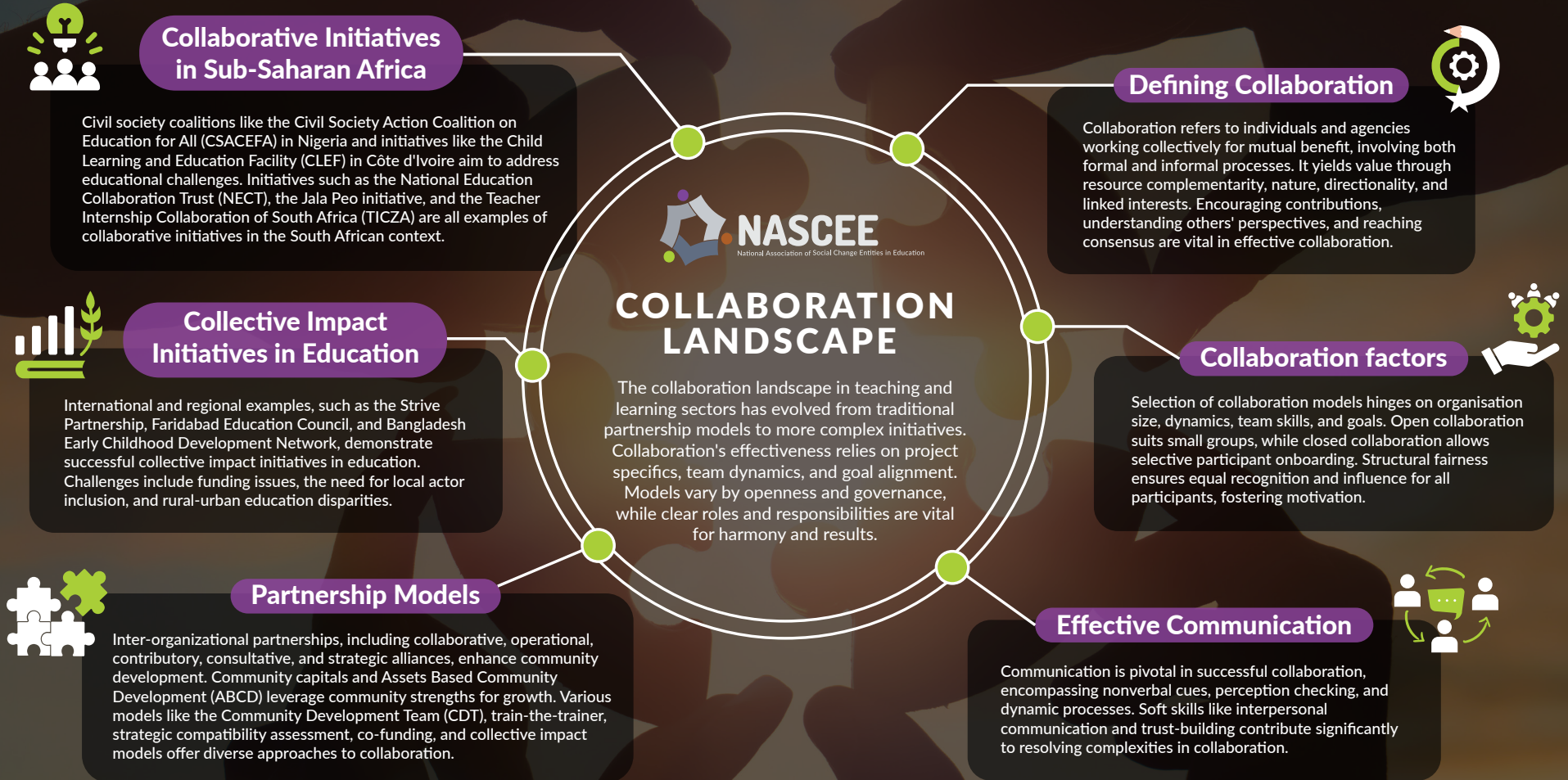


Collaborative partnerships for collective impact on education outcomes

JET Education Service was commissioned by the National Association of Social Change Entities in Education (NASCEE) to conduct and implement a pilot project in the John Taolo Gaetsewe district in the Northern Cape. The pilot aimed to test and refine a collaborative model focussing on the coordination and cohesion of identified funders, government entities and NGOs who have a vested interest in improving collective learner outcomes. This thought piece is the first of two publications sharing insights and lessons learnt from collaborative efforts.



Quantifiable progress tracking and stakeholder collaboration are common features of the collective impact framework as well other traditional models of collaboration. The backbone organization is a unique feature of the collective impact model. Successful initiatives within the collective impact model emphasise stakeholders' willingness to collaborate, quantifiable data, flexibility and value creation for stakeholders.